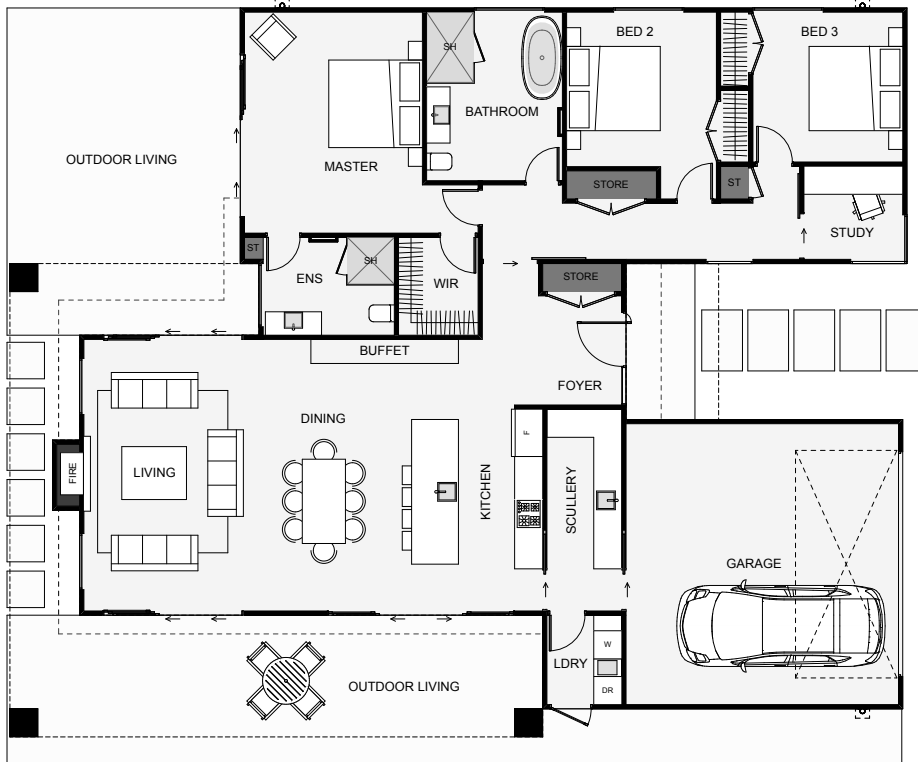




The Marx is a simple, effective layout with exterior styling that looks good from all angles, including the street. The skewed floor plan allows for both a morning and afternoon outdoor living space, following the sun path. An inbuilt pergola also gives overhead cover options. A nice feature of this home is the scullery with direct access from the garage, making grocery shopping a breeze. The mono roof angle allows an overhead window in both the living and ensuite to capture the first light each morning. If you're looking for a home design that has all bases covered, this could just tick your boxes!



Floor Area: 200m²

 2
  3+
  2
  1
  19.2m
  15.6m

Contact Sam Johnston:

Phone: 021 158 3741

E: sam@johnstonbuilders.co.nz

 **www.johnstonbuilders.co.nz**

