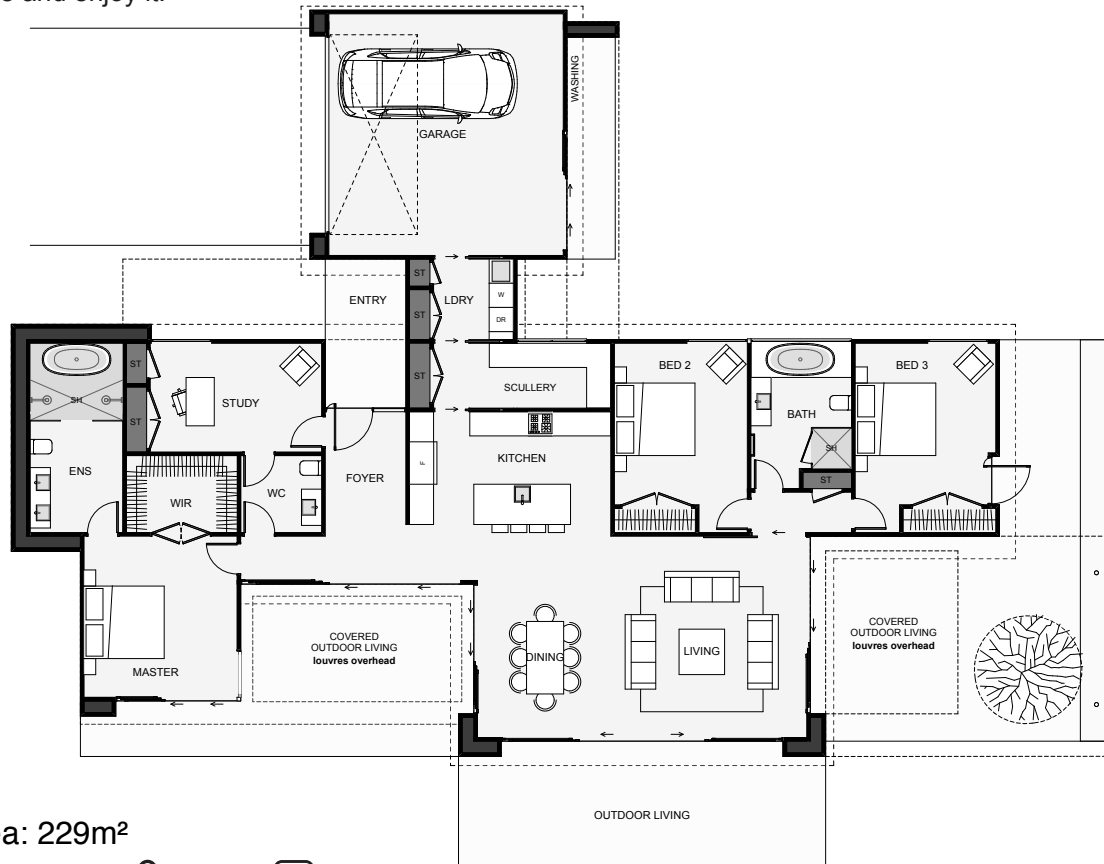
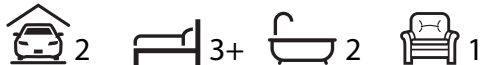




The Maverick is a home designed with a lot of features. If you work from home, the office with direct access to both the foyer and toilet will be a great advantage. The master includes a large walk-in wardrobe and an ensuite with its own bath. A large scullery with direct access to the garage makes grocery shopping that little bit easier. The main living has high ceilings and high glazing with metal sunshade louvres for maximum comfort. A big advantage of this home is the expansive outdoor living space cover with optional built-in louvres for sun and rain control. If you have a section with a view, this home will help you capture and enjoy it!



Floor Area: 229m²



24.5m 18.5m

Contact Sam Johnston:

Phone: 021 158 3741

E: sam@johnstonbuilders.co.nz

www.johnstonbuilders.co.nz

