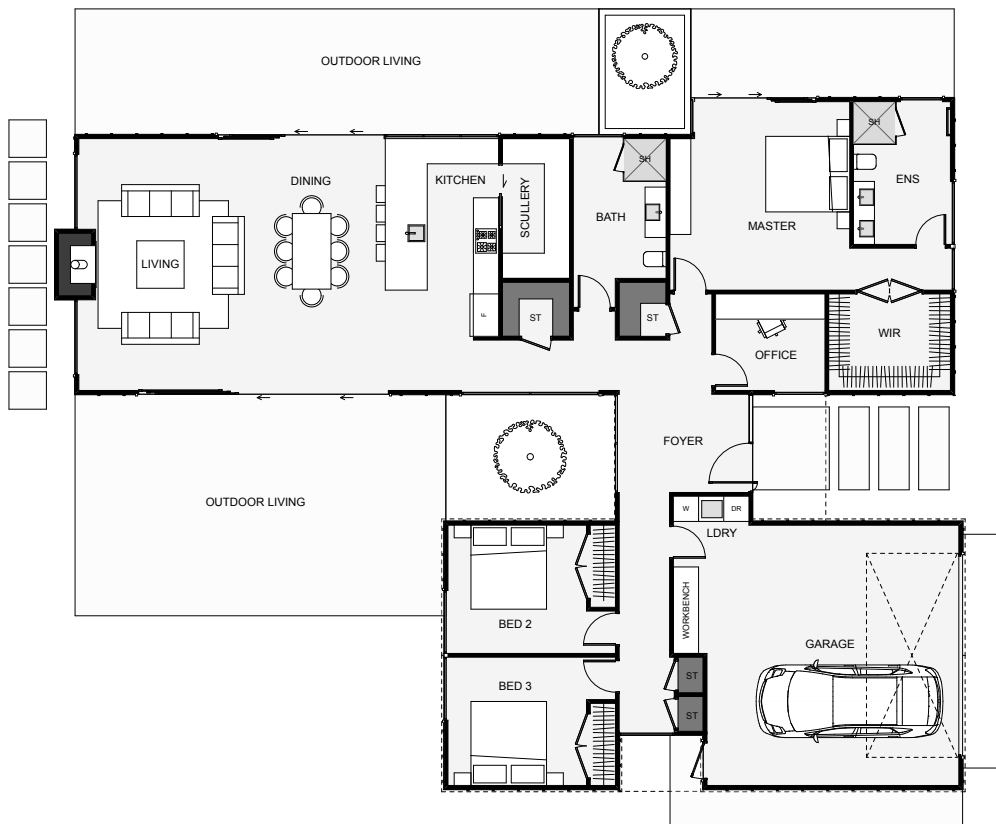




**JohnstonBuilders**

The Zelda captures both classic and modern design elements. Two main pavilions wrapped in traditional board and batten cladding, louvre detailed gables and a stone finish chimney, gives this home real character. The full height glazing, minimal overhang and chimney cap, bring this home into modern territory. The layout makes the most of the natural sun path and provides dual outdoor living options. Other features include a separate office, a separate master, a scullery and plenty of storage. If you're looking for a plan that feels like home, this is it!



Floor Area: 222m<sup>2</sup>

 2  
  3+  
  2  
  1  
  21.6m  
  16.5m

Contact Sam Johnston:

**Phone:** 021 158 3741

**E:** sam@johnstonbuilders.co.nz

 **www.johnstonbuilders.co.nz**

